

The Necessity to Create a Facilities Master Plan For Philadelphia Schools



Lauryn Reynolds
Dr. Akira Rodriguez: The Weitzman School of Design



BACKGROUND

Condition of Buildings:

Age

- Average Age of Philadelphia Schools: 75 years old **VS.** Average Age of schools in the U.S.: 44 years old

Lead and Asbestos

- In 2018, about 11 schools that were tested for environmental hazard and found asbestos.
- Hamilton School in West Philadelphia lined with bacteria that could trigger asthma
- A Philadelphia teacher was diagnosed with mesothelioma after teaching in classrooms with asbestos pipe-insulation.
- 57% of schools had lead contamination above the federal limit

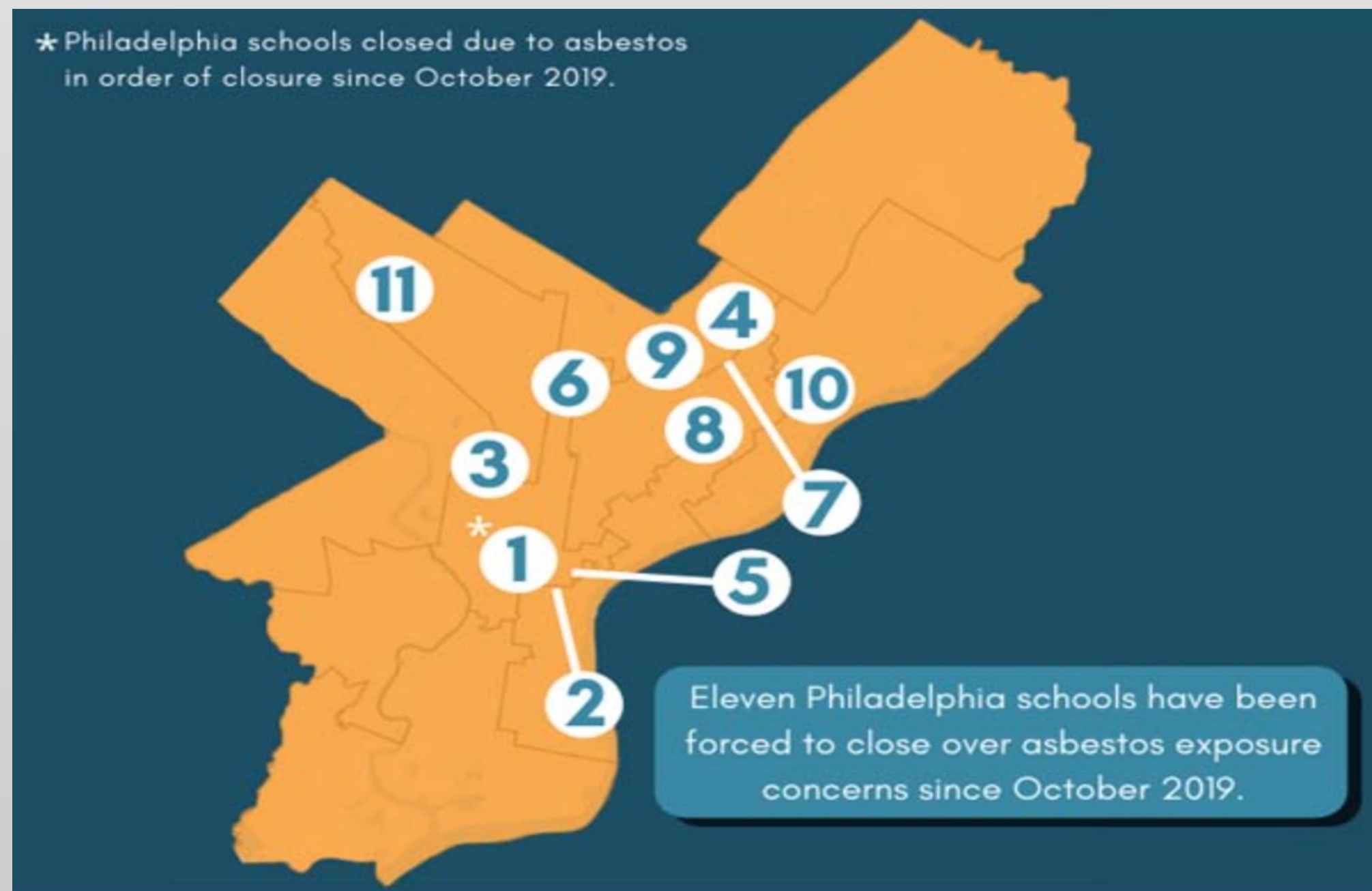
Funding

Estimated about \$3 billion to fix urgent damage and \$5 billion to fix all damage.

- These funds are not being allocated due to the Republican held legislature blocking the ability for funding.

Funding for capital investments in Philadelphia, similar to other districts, is based of the area's taxable property-value.

- Many poorer districts are then left behind
- In the U.S., about 45% of funding for school facilities comes from local government.



LONG-TERM GOAL

To create a Facilities Master Plan to allow for more transparency for students, parents, and staff about the health of school buildings.



Heavy rain leading to flooding caused the cafeteria's ceiling to collapse at Palumbo School in South Philadelphia.



At JB Kelly School in Philadelphia the painted sign is one example of where lead contamination was found. In 1999, the EPA finally forced the the School District of Philadelphia to test the lead levels. The painted signs show the high levels of contamination found in over half of Philadelphia schools.

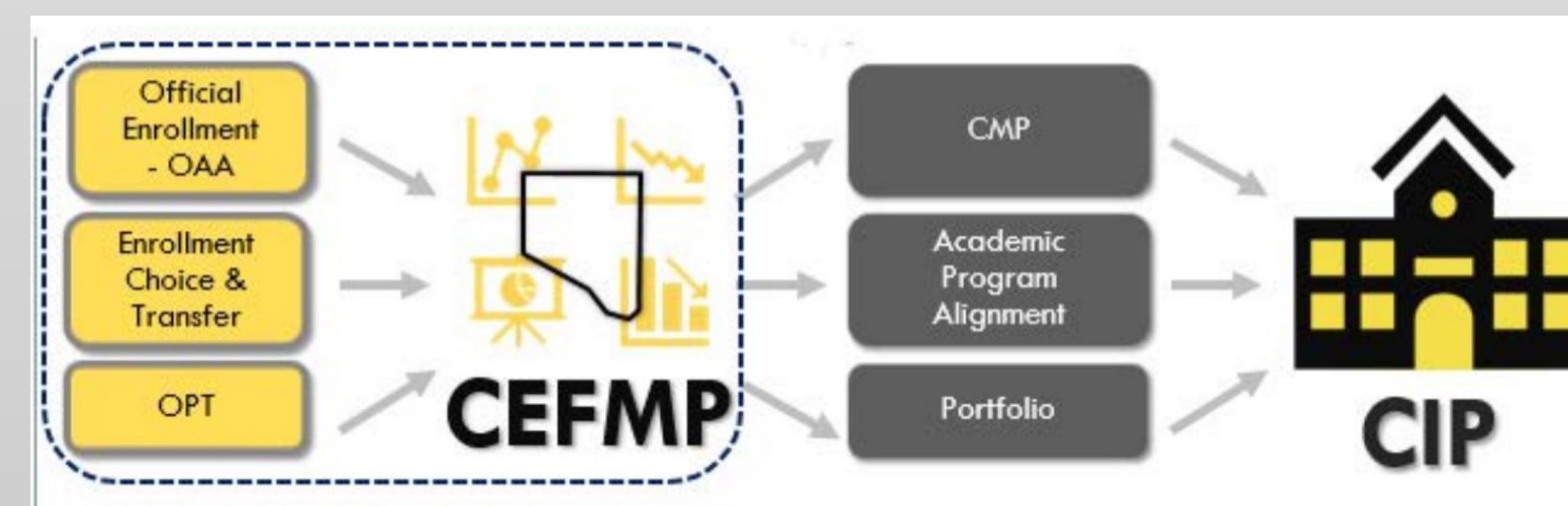
STAKEHOLDER WANTS

Stakeholders (parents, advocates, etc.) who advocate for the goals of the master plan specifically want:

- Address the issue of timeliness in accessing data on school facilities
- Looking at other city school districts for models of a facilities plan
- Creating a more accessible tool for parents to ensure that their child's school is healthy and safe.
- How do we get parents from all areas of the city to care about the health of all school facilities?
- How can we effectively work with the School District of Philadelphia to implement this plan?

Baltimore City Public Schools 2020 Comprehensive Educational Facilities Master Plan

- This plan was created in addition to the annual Facilities Master Plan that must be submitted to the State's Interagency Committee on Public School Construction (IAC).
- They focus on "providing what each student needs rather than providing the same to each student". This means having equity at the forefront of their decisions about school facilities
- It includes a goal of 86% utilization rate of the school buildings.

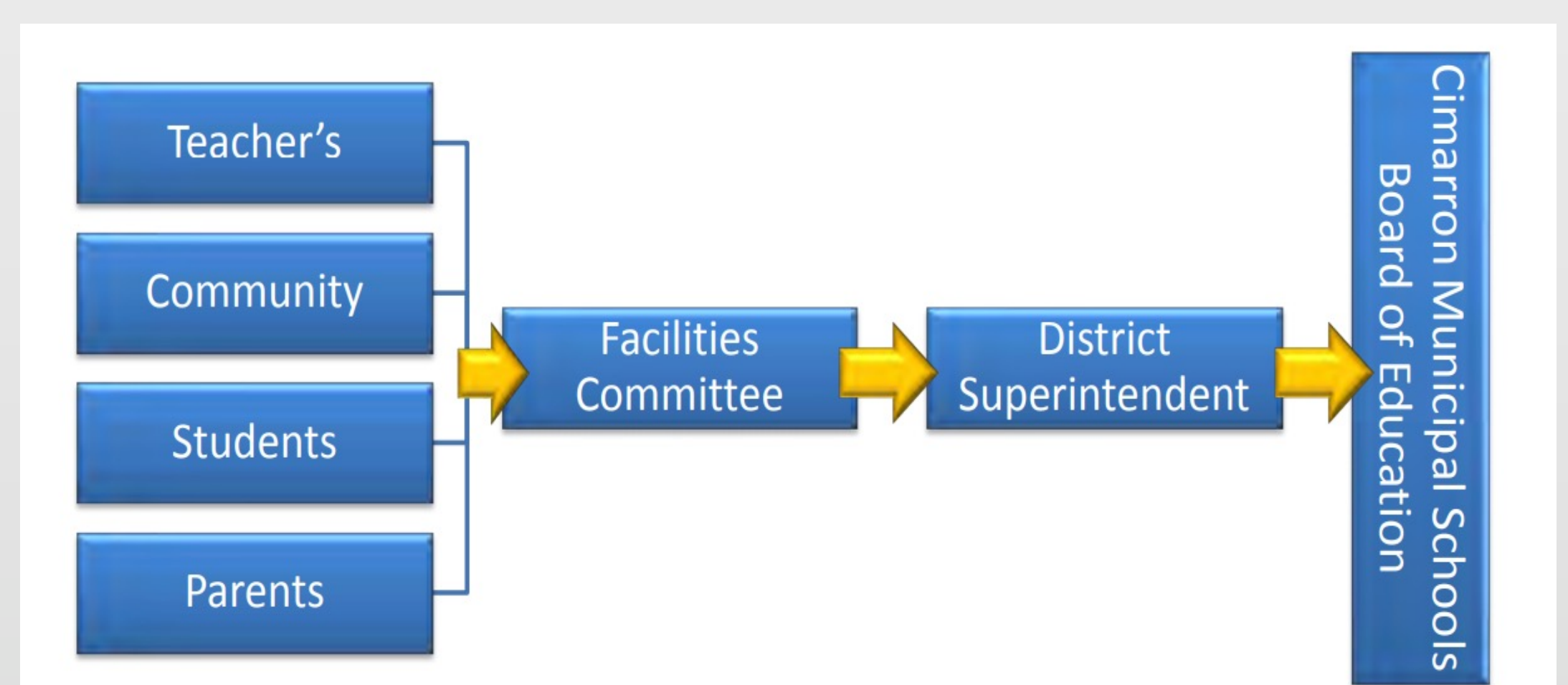


EXAMPLES OF OTHER PLANS

Cimarron Municipal Schools, New Mexico, District Facilities Master Plan, 2013

- This plan is required by the Public School Capital Outlay Council (PSCOC) that says all public school districts in New Mexico must create this plan every five years. That way they can then receive funding for needed capital once finished.
- The plan is created by a Facilities Master Plan committee to take into account birth, migrations, housing, program requirements, historical enrollments; educational facility assessments which included quantitative / qualitative analysis, capacity studies, profiles, priorities; and community and school profiles which included demographics, educational program, academic achievements, and financial information.

How Decisions are Made About the Plan:



This school district takes into consideration all requests from local schools to top school administration.

How Decisions are Made About the Plan

The plan is made by collecting data (enrollment, etc.) throughout the year that will then make up the CEFMP plan.