

# Multiplexed Longitudinal Profiling of Living Organoids

Phoebe Vallapureddy<sup>1\*</sup>, David E. Reynolds<sup>1</sup>, Yusha Sun<sup>1</sup>, Xin Wang<sup>1</sup>, Jianhua Lim<sup>1</sup>, Menghan Pan<sup>1</sup>, Andres Fernandez Del Castillo<sup>1</sup>, Jonathan C. T. Carlson<sup>2</sup>, Mark A. Sellmyer<sup>1</sup>, Maclean Nasrallah<sup>1</sup>, Zev

Binder<sup>1</sup>, Donald M. O'Rourke<sup>1</sup>, Guo-li Ming<sup>1</sup>, Hongjun Song<sup>1</sup>, and Jina Ko<sup>1</sup>

1. University of Pennsylvania, Philadelphia, PA; 2. Massachusetts General Hospital, Harvard Medical School, Boston, MA

\*SEAS '26, Vagelos Undergraduate Research Grant Recipient (Fall 2022)

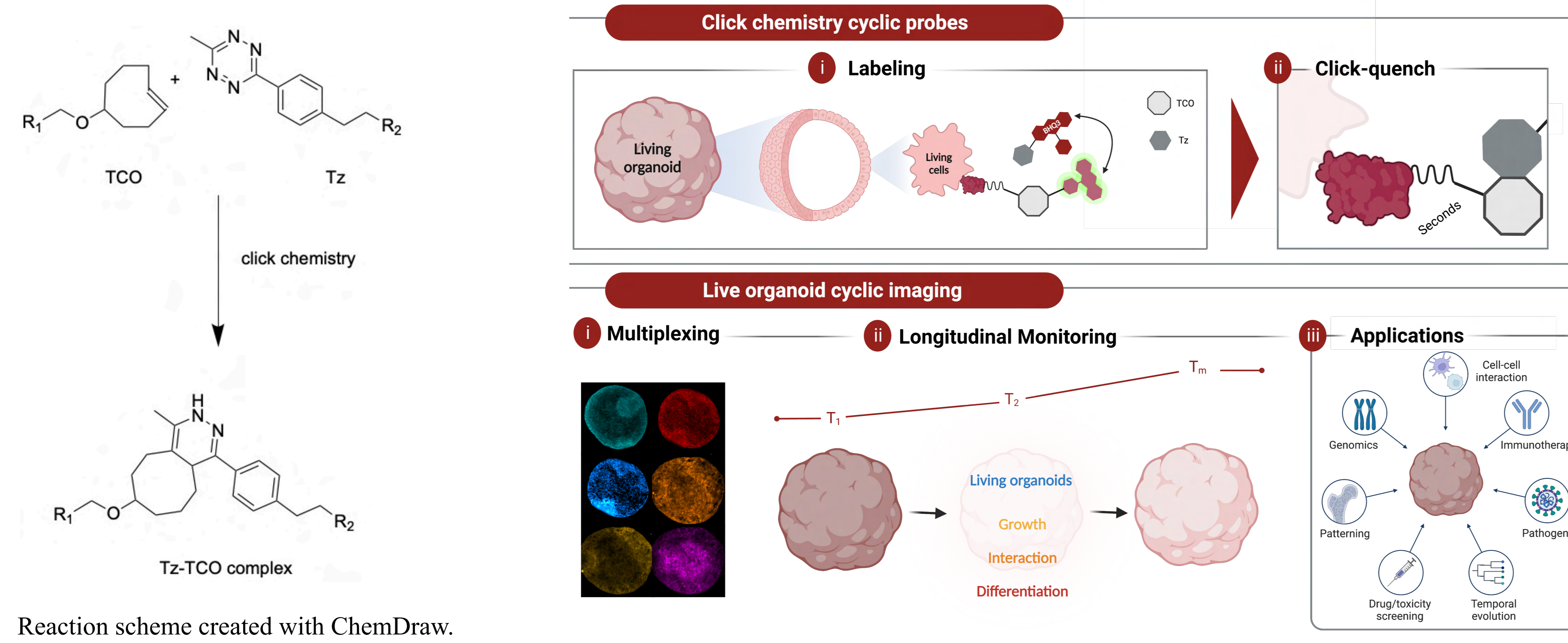


R00CA256353

R35NS097370

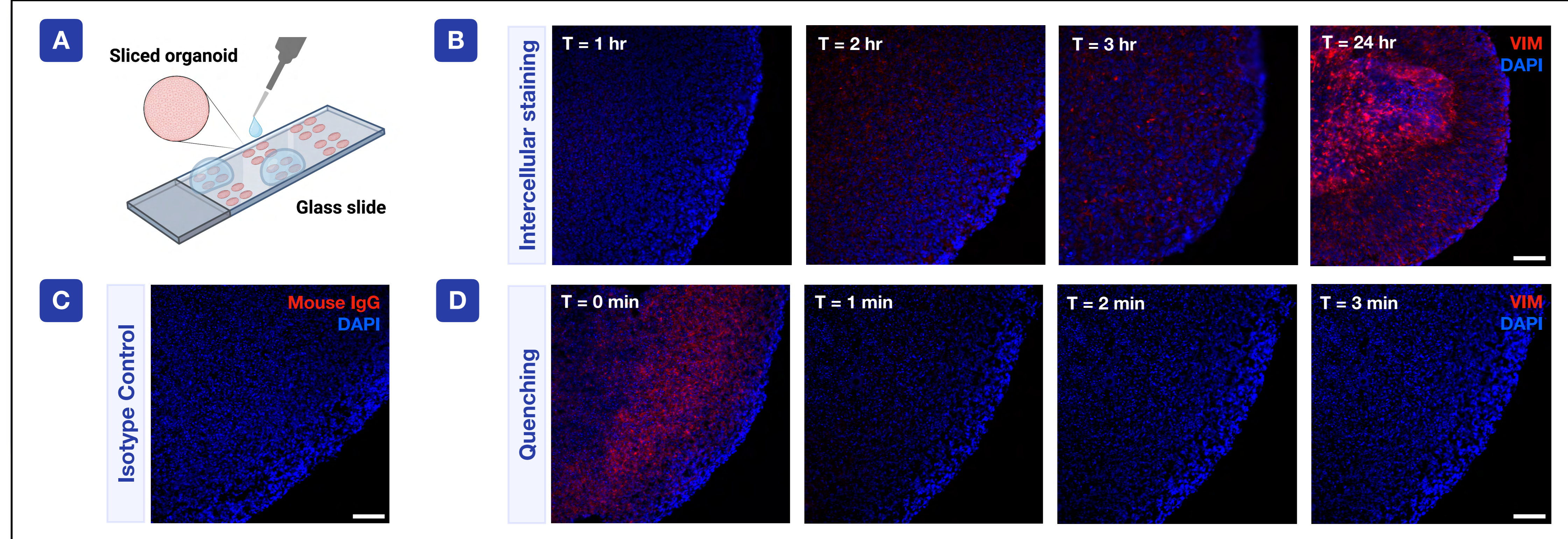
R35NS116843

## CLICK CHEMISTRY FOR RAPID STAINING AND QUENCHING

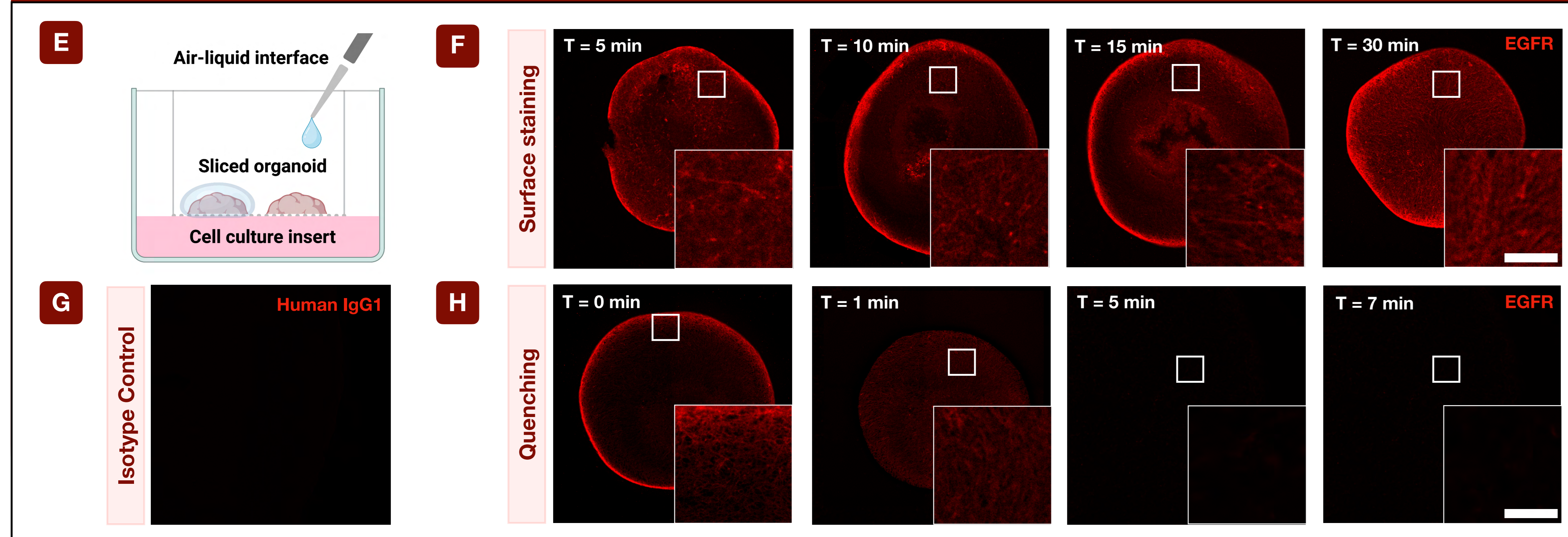


## PROTEOMIC PROFILING IN FIXED AND LIVE ORGANOIDS

### Fixed Patient-Derived Brain Organoids



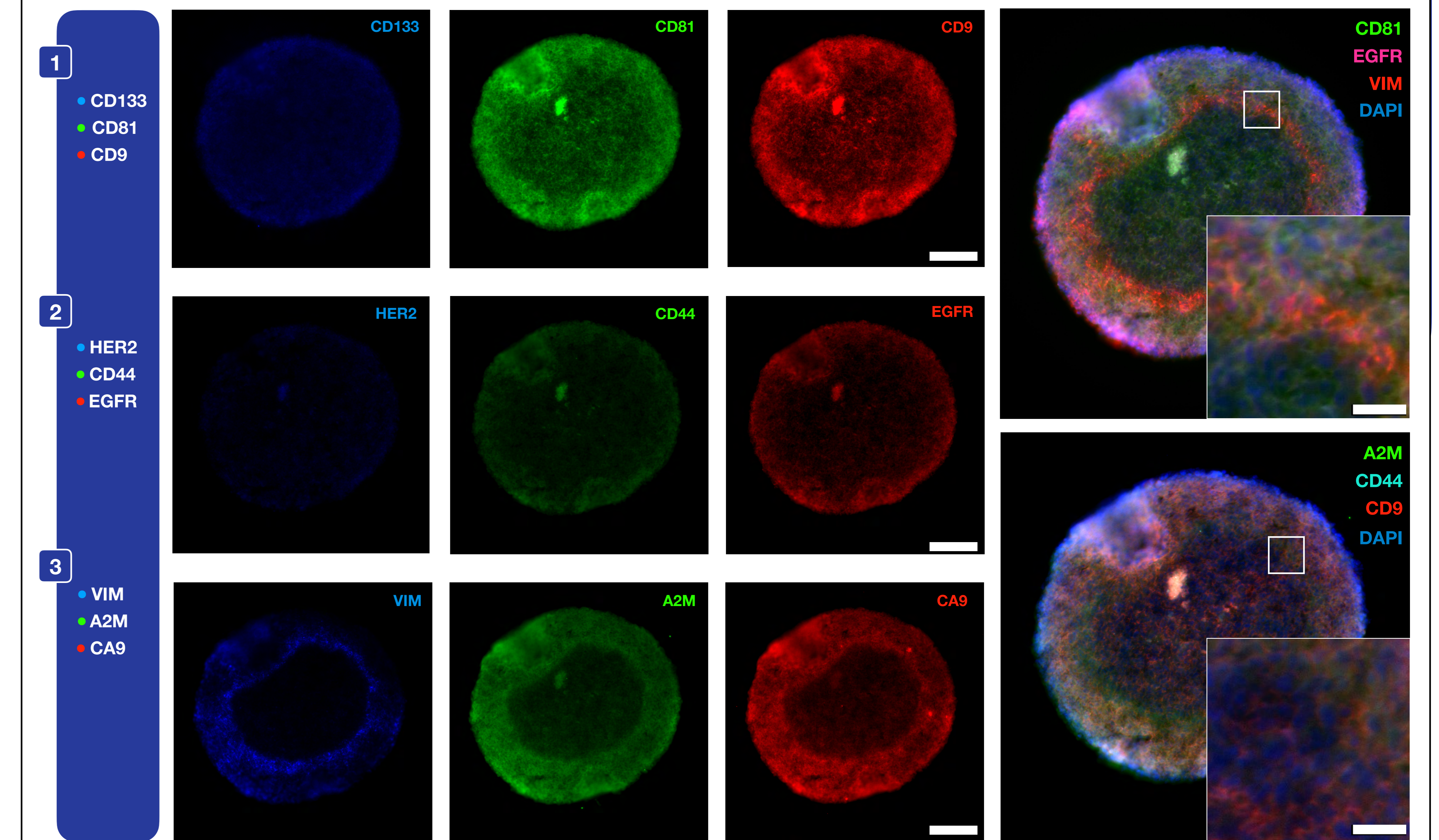
### Live Patient-Derived Brain Organoids



Scale bars = 100  $\mu$ m.

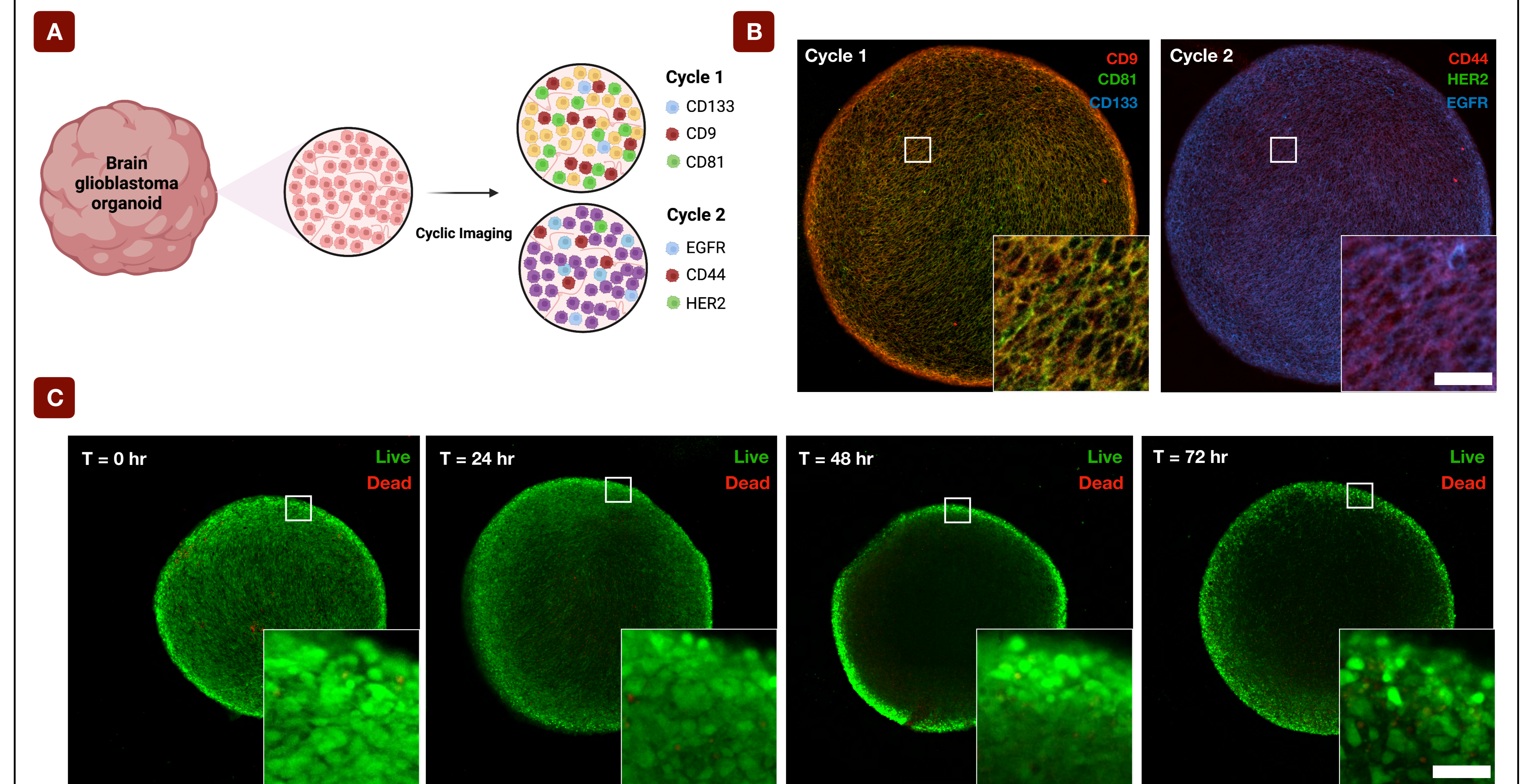
## CYCLIC IMAGING OF GLIOBLASTOMA BIOMARKERS

### Multiplex imaging in Fixed patient-derived glioblastoma organoids



Scale bars = 25  $\mu$ m.

### Multiplex imaging in Live patient-derived glioblastoma organoids



Scale bars = 50  $\mu$ m.

Figures created with BioRender.com.